



Laurentide 

Uraqua+

Highly Durable Exterior **METAL** Finishing System

WATER-BASED - ECO-FRIENDLY





Highly Durable Exterior Metal Finishing System



The **Uraqua** finishing system is based on a very specific selection of water-based based, urethane-acrylic polymers, with superior outdoor durability.

Designed for the door and window industry or for any similar application requiring high performance. The **Uraqua** paint system allows for efficient applications in an industrial mode whether the application is manual or robotic.

Dries rapidly under variable environmental conditions, **Uraqua** is low in VOCs, highly durable and allows you to create a refined, high-end, smooth and even finish.

Meeting the highest standards of the window and door industry, manufacturers that choose to adopt it, benefit from the durability and robustness of the **Uraqua** system.

Uraqua is very versatile, adheres also to PVC, wood and fiberglass.

Uraqua offers excellent performance on pre-painted metal substrates. The pigmentation selected to create the wide range of colours is highly resistant, preventing undesirable heat build-up and maximizing the durability of the painted surface. The opaque version is also available with a metallic or textured finish!

Although designed for outdoor use, it is possible to use the **Uraqua** exterior finishing system indoors to create aesthetically pleasing, enduring and chemically resistant finishes. For example, furniture, metal cabinets and other various equipment may be painted with this system and obtain the benefits of its performance.

QUALITIES

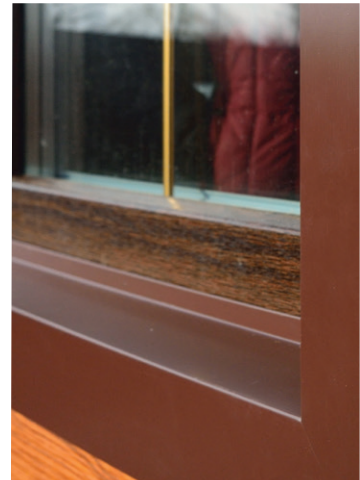
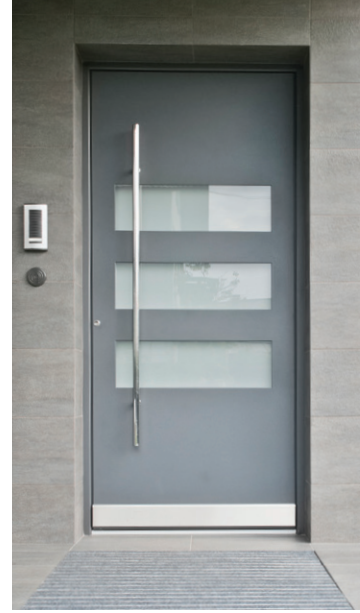
- Excellent weatherability
- High chemical and erosion resistance
- Easy application, designed for industrial use
- Rapid drying time under various ambient conditions
- Excellent adhesion properties on numerous substrates
- Durable pigmentation
- Low heat build-up
- Water-based, low VOCs
- Non-toxic hardener, isocyanate-free
- Available in a wide range of standard or custom colours
- Meets AAMA Standards



SURFACE PREPARATION

- The pre-painted metal must thoroughly be washed before starting any work.
- It must then be sanded adequately (orbital sander, 180 grade paper or Scotch Brite 7447 PRO) prior to beginning the applications so that the surface is completely unpolished.
- It must then be thoroughly dusted and washed again with **Innoprep** 107 before being painted.
- If the metal surface was stripped during sanding, **Innopoxy** must be applied to provide corrosion protection and optimum adhesion.
- All coats applied with this system may be air-dried or oven dried to speed up drying.

Laurentide Paint **OFFERS A GUARANTEE** for its **Uraqua** finishing systems; contact your representative to find out the details for your application system.



Doors and Windows, Pre-painted Metals

NUMBER OF COATS	RECOMMENDED PRODUCT
1	Uraqua Opaque
1	Innopoxy S or W*
Cleaner	Innoprep 107

* OPTIONAL, ACCORDING TO THE SUBSTRATE

URAQUA METAL COATING PRODUCTS



A bi-component product. Once the hardener has been incorporated, the opaque Uraqua may be applied by spray or brush. One coat is required, it can be applied in two (2) consecutive passes without the waiting time in between passes. Application is simple, the sag resistance is exceptional, and spreading is excellent. These characteristics make it easy to apply, regardless of the application equipment used.

Colour pigmentation that reflects infrared rays to reduce heat build-up and prevent premature deterioration.

Optimum UV protection, highly durable pigmentation.

Smooth, resistant finish.

Textured or metallic finish also available.



A calibrated solvent mixture used to thoroughly clean and degrease pre-painted metal surfaces prior to painting. Leaves no residue or wipe marks on the surface. For pre-painted substrates, it is recommended to use Innoprep prior to sanding to remove any contaminants and after dusting off the sanded surfaces, before painting with Uraqua.



A bi-component water-based epoxy primer procuring optimal adhesion and corrosion protection for bare metals. Once the hardener is incorporated, the Innopoxy may be easily applied by spray. Once dry, it may sanded, if required, with 320 or 400 grade paper. The surface must be dusted and then washed with Innoprep 107 before applying the Uraqua.



Laurentide Paint, a Quebec company, creating water-based coatings for manufacturers of siding, mouldings, windows and doors.

Telephone: 1.800.567.9481

laurentide.co

